



**POSTAL SERVICES DEPARTMENT BUILDING  
MUMONG**

# **OFFICE FLOOR FOR RENTAL**

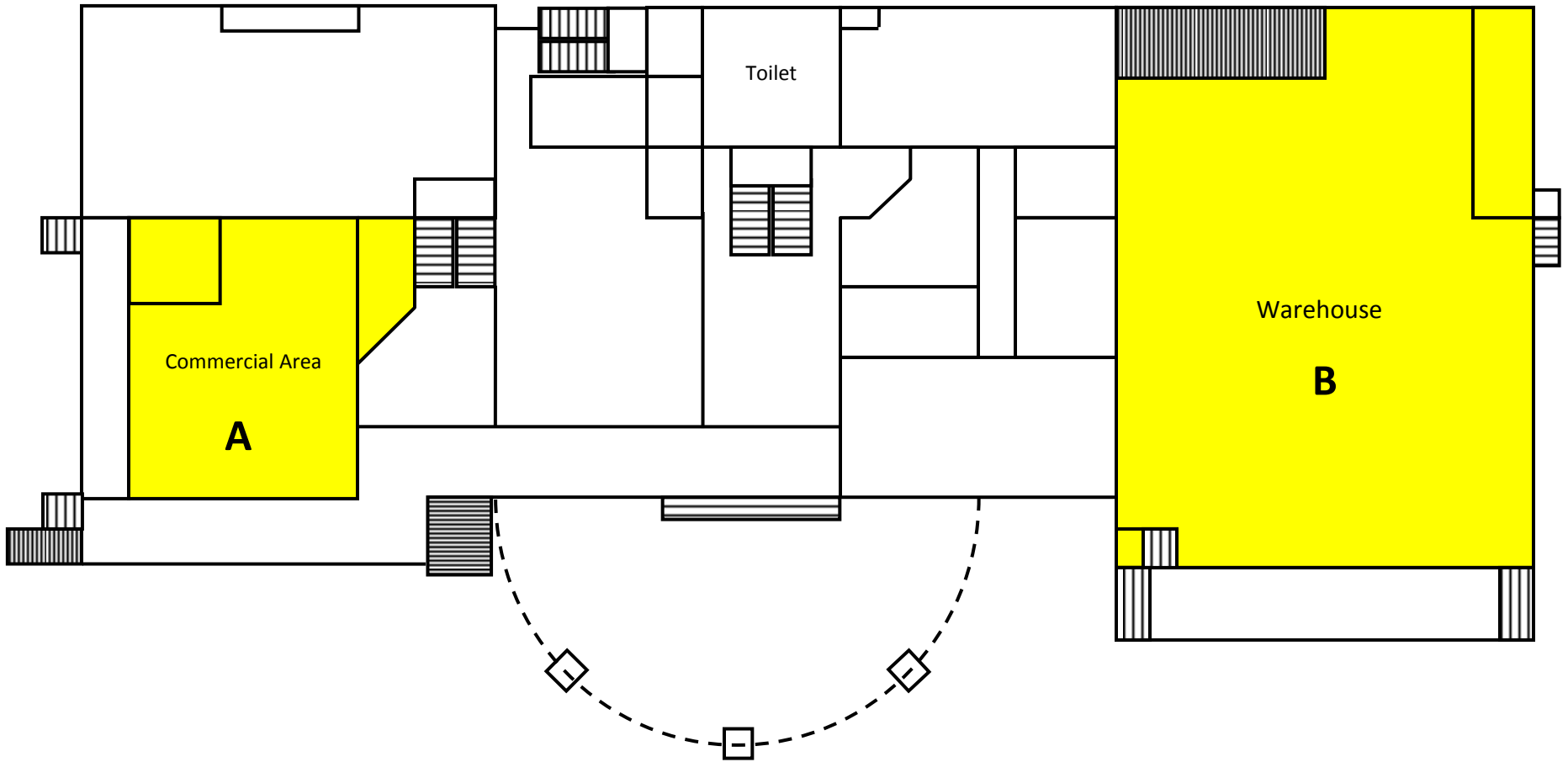
1. Terms and Condition applied.
2. For more details,  
please contact +673 222 0424  
or email us at [tender.inquiry@post.gov.bn](mailto:tender.inquiry@post.gov.bn)

## SIZE AND LOCATION

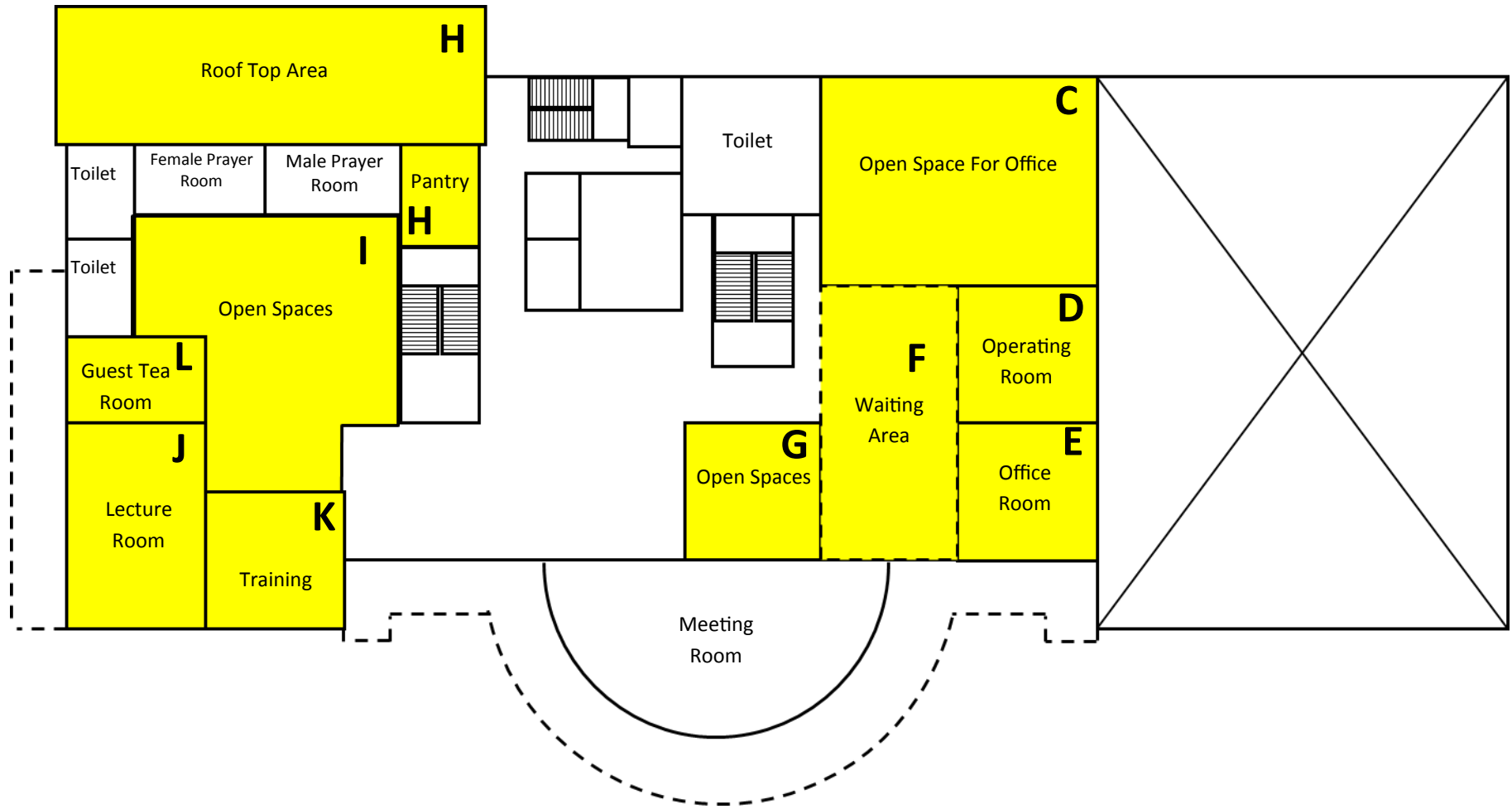
	Mark	AREA	SIZE (ft <sup>2</sup> )	REMARK (CADANGAN JENIS PERNIAGAAN)
Ground Floor	A	<a href="#">Commercial Area</a>	1388.14	Food & Beverages (F&B), retails, cube box, etc.
	B	<a href="#">Warehouse</a>	4650.38	Distribution center, inventory, order Fulfilling, etc.
First Floor	C	<a href="#">Open Office Spaces for Office</a>	1162.6	Offices, tuition school, training area, re-tails, etc.
	D	<a href="#">Operating Room</a>	387.7	
	E	<a href="#">Office Room</a>	387.7	
	F	<a href="#">Waiting Area</a>	775.2	Booth sale
	G	<a href="#">Open Spaces (in front of the stair)</a>	387.7	
	H	<a href="#">Roof Top Area</a>	1162.8	F&B, i.e. Restaurant, excapade sushi, coffee bean and tea leaf, etc.
	I	<a href="#">Open Spaces</a>	1534.65	Booth sale
	J	<a href="#">Lecture Room</a>	581.45	Offices, tuition school, training area, re-tails, etc.
	K	<a href="#">Training Room</a>	387.7	
	L	<a href="#">Guest Tea Room</a>	258.3	
Second Floor	M	<a href="#">Open Spaces for Office</a>	969	Reserved
	N	<a href="#">Meeting Room (2nd Floor)</a>	490.9	Combined for a very large open area F&B i.e. restaurants.
	O	<a href="#">Pantry / Storage / Server Room</a>	1162.89	
	P	<a href="#">Roof Garden</a>	5083.2	
		Jumlah	20770.31	-

\*Click on the area (In blue) to see pictures

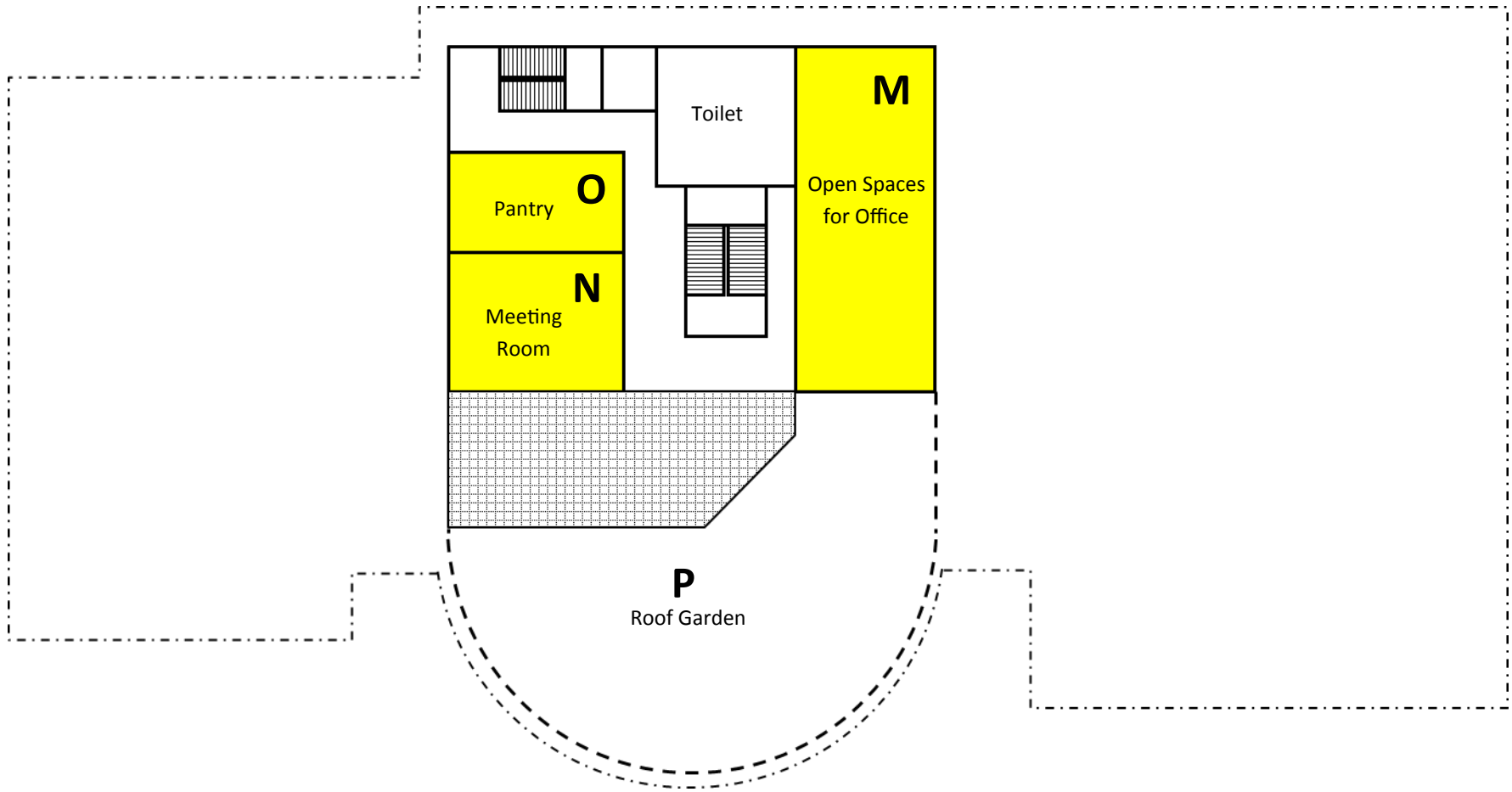
# GROUND FLOOR



# FIRST FLOOR



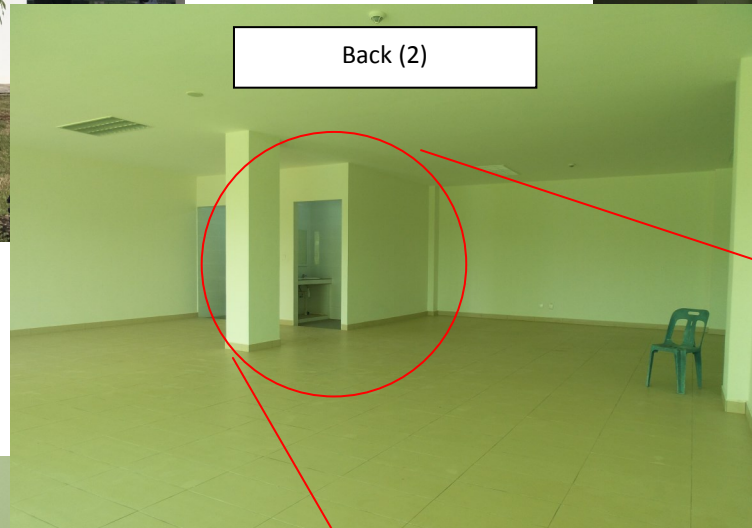
# SECOND FLOOR



## Area A



# Area B









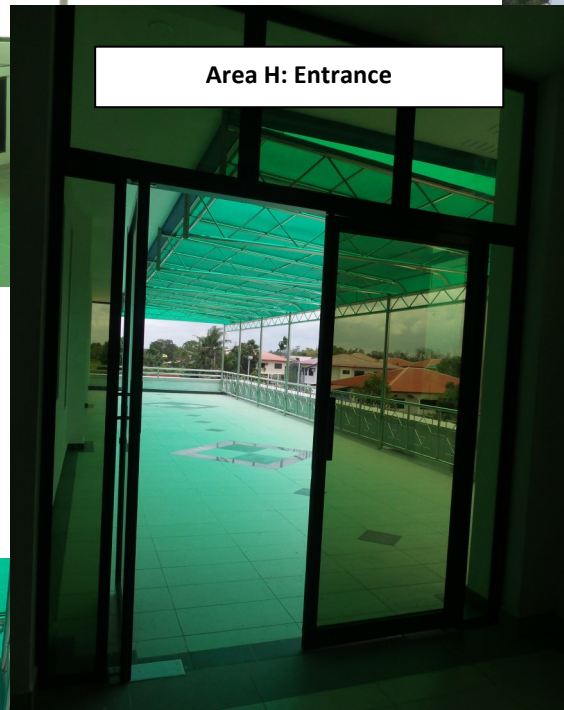
# Area H



Area H: Small Pantry/Kitchen



Area H



Area H: Entrance



Area H



Area H

[BACK TO TOP](#)

## Area J



[BACK TO TOP](#)

## Area K



[BACK TO TOP](#)



## Area O & P

